

# PAN-AM

A Catalis Dental Lab Partner

## Advanced Digital Dentures

Enhancing Traditional Techniques with Modern  
Technology to Provide a New Level of Patient Care



## How Does it Work?

- Digital dentures still rely on proper clinical records—you can start with traditional impressions or scans.
- Intraoral scanning can replace traditional alginate and PVS impressions for most cases.
- Traditional wax rims are used to capture bite registration for edentulous patients.
- Monoblock try-ins can be used to check functionality and can be adjusted chairside for patient comfort and scanned back to the lab while the patient wears them home.

**There are different digital denture workflows to meet your needs for any full denture case.**

**One Appointment**



**Two Appointment**



**Three Appointment**



**Pan-Am is here to walk you through from start to finish.**

## Advantages of Digital Dentures

### Quicker Turnaround

- Digital denture stages require only 5 days in-lab.
- No need to ship impressions to the lab.
- No need to return printed try-ins for finish if there are no adjustments that need to be made.

### Advanced Materials

- Pan-Am uses the highest quality tooth and base resins.
- Resin print is stronger than traditional acrylics.
- Tooth resin comes in 16 different Vita shades, including bleach. Our base resins come in original, meharry and light pink shades.

### Repeatability

- Produced using FDA 510k-cleared materials and workflows
- Denture files stored indefinitely for future use.
- Backup or replacement dentures can be fabricated in as little as 72 hours.

### Enhanced Precision

- Pan-Am uses high resolution 3D Printers.
- Modern design tools provide lifelike anatomy and optimal function.
- 3D Printing technology is able to provide better fit than ever before.

# One Appointment

## 1-Step Workflow

### Steps:

1

### Ideal Indications:

Immediate Dentures  
Backup Dentures  
Replica Dentures

### Notes:

Get an Immediate or Backup Denture in less than 1 week.

## WITHOUT an Existing Denture

### Step 1

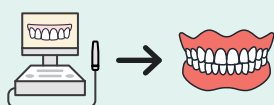
- Doctor submits upper, lower, and bite scans
- Lab sends printed denture for delivery.



## WITH an Existing Denture

### Step 1

- Doctor submits existing denture or scan of denture with border molding, wash impression, bite registration, and opposing.\*
- Lab sends printed denture for delivery.



**\*Note:** The scan of the denture needs to be a full 360 scan without holes.



# Two Appointment

## 2-Step Workflow

### Steps:

2

### Ideal Indications:

All Denture Cases

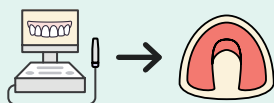
### Notes:

This workflow delivers a high quality denture in just two easy appointments.

## WITHOUT an Existing Denture

### Step 1

- Doctor submits upper, lower, and bite scans
- Lab sends wax rim(s)



### Step 2

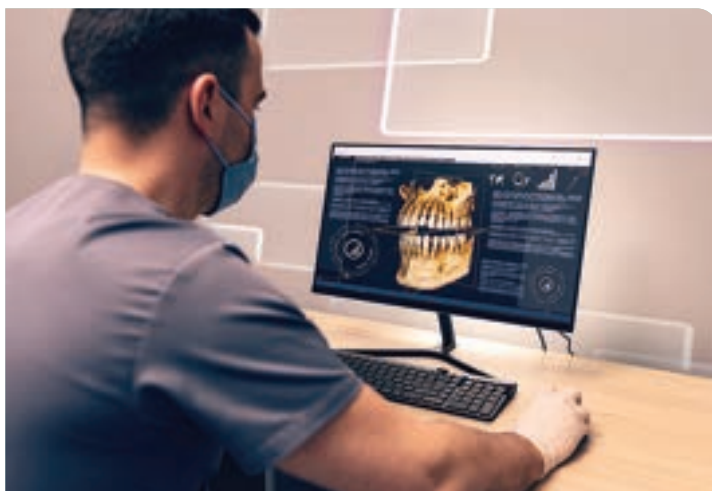
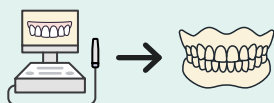
- Doctor sends updated bite-rim scans plus any captured adjustments (wash impression, border molding, midline, smile line).
- Lab sends printed denture for delivery.



## WITH an Existing Denture

### Step 1

- Doctor submits existing denture or scan of denture with border molding, wash impression, bite reg., and opposing.
- Lab sends printed monoblock denture try-in.



## Step 2

- Once try-in is approved and there are no further changes, the doctor can call or email the lab to proceed to final denture.\*
- Lab sends printed denture for delivery.



**\*Note:** Doctor can make adjustments to try-in as needed and/or take a new wash impression or bite registration before going to final. Try-ins with adjustments can be scanned or shipped to the lab.



# Three Appointment

## 3-Step Workflow

### Steps:

3

### Ideal Indications:

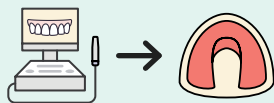
Edentulous patients who have not already had a denture; patients who must have a try-in before finishing.

### Notes:

The try-in can be printed in a monoblock resin (recommended). A traditional teeth-set-in-wax try-in is available upon request, but it may not reflect the full customization possible with digital teeth design. Additional charges and longer turnaround times may apply for the wax option.

## Step 1

- Doctor submits upper and lower scans
- Lab sends wax rim(s)



## Step 2

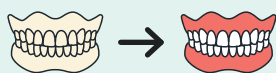
- Doctor scan wax rims(s) with bite registration wash impression, border molding, midline and smile line marked.
- Lab sends printed monoblock denture try-in.





### Step 3

- Once try-in is approved and there are no changes to be made, the doctor can call or email the lab to proceed to final denture.\*
- Lab sends printed denture for delivery.



**\*Note:** Doctor can make adjustments to try-in as needed and/or take a new wash impression or bite registration before going to final. Try-ins with adjustments can be scanned or shipped to the lab.



## FAQs

### Q. Can a printed denture be relined?

A. Yes, printed dentures can be adjusted and relined the same as traditional dentures.

### Q. What is the warranty on printed dentures?

A. Pan-Am offers a **Lifetime Warranty** on printed dentures. We will remake an identical denture at no charge should it fail due to any defect caused by the manufacturing process.

### Q. What is the best way to clean printed dentures?

A. Patients should clean their digital dentures with a soft-bristle toothbrush and mild soap. Remind them never to soak the dentures in any solution or water.

### Q. What's the difference between a copy/replica denture and a reference denture?

A. A copy/replica denture is an exact duplicate of your current denture, where no tooth movements, bite adjustments or border extensions are possible. This workflow is ideal if you need a back-up denture. A reference denture is a totally new design that takes the current set up into account. This workflow is ideal if you have a denture you like, but it is worn down and needs to be refreshed with new teeth, esthetics or better retention.

### Q. How can I get a backup denture for my patient?

A. Pan-Am keeps the original files for all printed dentures. Simply call or email the lab, provide the patient information, and we will get a duplicate denture sent to you in less than 7 days.

### **Q. What are printed dentures made of?**

A. Our denture bases are made from a premium, high-impact smart polymer resin—a Body-Activated Material that increases its fracture resistance at body temperature. Pan-Am's Premium Tooth resin and Highly Characterized (HC) libraries deliver the esthetic features lab technicians and dentists expect in premium denture teeth. We continually evaluate and research advanced resin technologies to ensure we stay ahead of industry standards.

---

### **Q. Do I need to send the printed try-in back to the lab?**

A. No. You can keep it or give it to the patient. If no adjustments are needed, nothing needs to be returned. If adjustments are needed, the patient may still keep the monoblock—just send us the updated scans instead of the physical try-in.

---

### **Q. Can you print my patient's partial denture?**

A: We can print acrylic partials in the same premium, high-impact material as our printed full dentures. Also, ask us about our printed flexible partials!

---

### **Q. What needs to be returned to the lab when a monoblock try-in has been adjusted?**

A. For any adjusted monoblock try-in, please send the following digital records:


- 360° scans of the monoblocks with trimmed wash impressions/border molding
- Opposing arch scan
- Bite scans
- Full-face patient photos of the patient wearing the monoblock (recommended for esthetics)

## **See for Yourself**

Send your first Digital Denture case today.



**Contact us to  
learn more**

 866.726.2635

 [info@panamdl.com](mailto:info@panamdl.com)



Scan this QR code  
to learn more

# PAN-AM

A **Catalis** Dental Lab Partner

Savannah, GA  
912.354.0727

Houston, TX  
713.781.6738

Sandy, UT  
801.446.6688

(866) 726-2635  
PANAMD.L.COM

