



Client:	
Order #:	
Project:	



DESCRIPTION

The COREBAY LED High Bay fixture, with its rugged die-cast aluminum housing, is engineered for durability and high performance in industrial and commercial spaces. Featuring a sleek design and advanced optical systems, COREBAY offers adjustable wattage and color temperature settings for optimal versatility. This fixture is perfect for warehouses, gymnasiums, and large retail spaces, providing high lumen output and energy savings with reliable, long-lasting performance.

FEATURES

- Field-adjustable wattage settings (100%, 80%, 60%, 40%) and color temperature (4000K and 5000K) enable tailored lighting solutions.
- Provides up to 175 lumens per watt, ensuring superior brightness and energy efficiency.
- Prismatic translucent lens reduces glare and distributes light uniformly, enhancing visual comfort.
- Die-cast aluminum construction improves durability and thermal management, extending the fixture's lifespan.
- Supports plug-and-play PIR and microwave sensors for motion detection and daylight harvesting to further energy savings.

CONSTRUCTION & ELECTRICAL

- One-piece die-cast aluminum with high corrosion resistance and white polyester powder coat finish for enhanced environmental durability.
- Operates on universal 120-277V or 347-480V input, accommodating various installation needs.
- Equipped with a 0-10V dimming driver for precise control from 100% to 10% light output.
- Includes 6KV surge protection and effective convection cooling to support long-term performance.
- Rated for over 134,000 hours (L70) with a standard 5-year warranty and optional 10-year coverage for additional peace of mind.
- Damp location rated

PERFORMANCE DATA

CRI

80+

CCT

4000K, 5000K

Projected Lifetime

>50,000 Hours (L80)

Dimming

0-10V Dimming Standard,

Operating Temperature

-40°C to 50°C Ambient

Warranty

5 year Standard

ORDERING INFORMATION

COREBAY / _____ / _____ / _____ / _____ / _____ / _____ / _____ / _____ / _____ / _____ / _____ / _____
 SERIES SIZE WATTAGE CCT DISTRIB. VOLTAGE DRIVER FEATURES EMERG. BATT. CORD CONTROLS MOUNT. ACC. WIRE GUARD WARRANTY

FIXTURE SERIES	
COREBAY	LED High Bay with Die Cast Housing
SIZE	
14	14 in. Nominal Length (130WS)
18	18 in. Nominal Length (160WS, 205WS)
27	27 in. Nominal Length (250WS, 300WS)
36	36 in. Nominal Length (410WS)
WATTAGE*	
130WS	52W, 78W, 104W, 130W Select.
160WS	64W, 96W, 128W, 160W Select.
205WS	82W, 123W, 164W, 205W Select.
250WS	100W, 150W, 200W, 250W Select.
300WS	120W, 180W, 240W, 300W Select.
410WS	164W, 246W, 328W, 410W Select.
CCT	
CS	80+ CRI, 40K, 50K CCT Select.

DISTRIBUTION	
HBD	High Bay Distribution (Standard)
NAD	Narrow Aisle Distribution
VOLTAGE	
UNV	Universal 120-277VAC
UHV	Universal High 347-480VAC
DRIVER FEATURES	
12A	12V Aux Power & 0-10V Dimming
EMERGENCY BATT. BACKUP	
EM8	8W (900 lm) 90 Min. Emerg. Batt. (130WS)
EM16	16W (2000 lm) 90 Min. Emerg. Batt. (160WS, 205WS)
EM25	25W (3500 lm) 90 Min. Emerg. Batt. (250WS, 300WS, 410WS)
EM30	30W (4000 lm) 90 Min. Emerg. Batt. (347V - 480V)
CORD	
C10	10 FT Power Cord, 3" ROJ, Stripped & Tinned
C6-515P	6 FT Black Power Cord with Standard 3 Prong Plug (120V)
C15-L715P	15 FT Power Cord Twist Lock L7-15 Plug (277VAC)

CONTROLS	
SRP	Sensor Ready Plug'n'Play Port (Standard)
MP	Motion PIR Occ. Plug'n'Play
MPBA	Motion PIR Occ. Plug'n'Play, Bluetooth App Control
MWP	Motion Sensor, Microwave Occ., Plug'n'Play
MWPBA	Motion Sensor, Microwave Occ., Plug'n'Play, Bluetooth App Control
MOUNTING ACC.	
CMY10FT	Set of (2) 10 FT SS Mounting Cables with Y-Toggles
CMY15FT	Set of (2) 10 FT SS Mounting Cables with Y-Toggles
SMBK	Surface Mount Bracket Kit
PMBK	Pendant Mount Bracket Kit
WIRE GUARD	
WG	Wire Guard (Ships Separate)
WARRANTY	
-	5 Year Warranty (Standard)
10Y	10 Year Warranty

PERFORMANCE DATA

COREBAY 130WS					
SETTING	SYSTEM WATTS	4000K		5000K	
		LUMENS (80CRI)	LPW (80CRI)	LUMENS (80CRI)	LPW (80CRI)
LV1	52 W	8,200 lm	158 lm/W	8,200 lm	158 lm/W
LV2	78 W	12,100 lm	155 lm/W	12,100 lm	155 lm/W
LV3	104 W	15,200 lm	146 lm/W	15,200 lm	146 lm/W
LV4	130 W	18,500 lm	142 lm/W	18,500 lm	142 lm/W

COREBAY 160WS					
SETTING	SYSTEM WATTS	4000K		5000K	
		LUMENS (80CRI)	LPW (80CRI)	LUMENS (80CRI)	LPW (80CRI)
LV1	64 W	10,600 lm	166 lm/W	10,600 lm	166 lm/W
LV2	96 W	15,500 lm	161 lm/W	15,500 lm	161 lm/W
LV3	128 W	20,000 lm	156 lm/W	20,000 lm	156 lm/W
LV4	160 W	24,100 lm	151 lm/W	24,100 lm	151 lm/W

COREBAY 205WS					
SETTING	SYSTEM WATTS	4000K		5000K	
		LUMENS (80CRI)	LPW (80CRI)	LUMENS (80CRI)	LPW (80CRI)
LV1	82 W	14,000 lm	171 lm/W	14,000 lm	171 lm/W
LV2	123 W	19,500 lm	159 lm/W	19,500 lm	159 lm/W
LV3	164 W	25,000 lm	152 lm/W	25,000 lm	152 lm/W
LV4	205 W	30,500 lm	149 lm/W	30,500 lm	149 lm/W

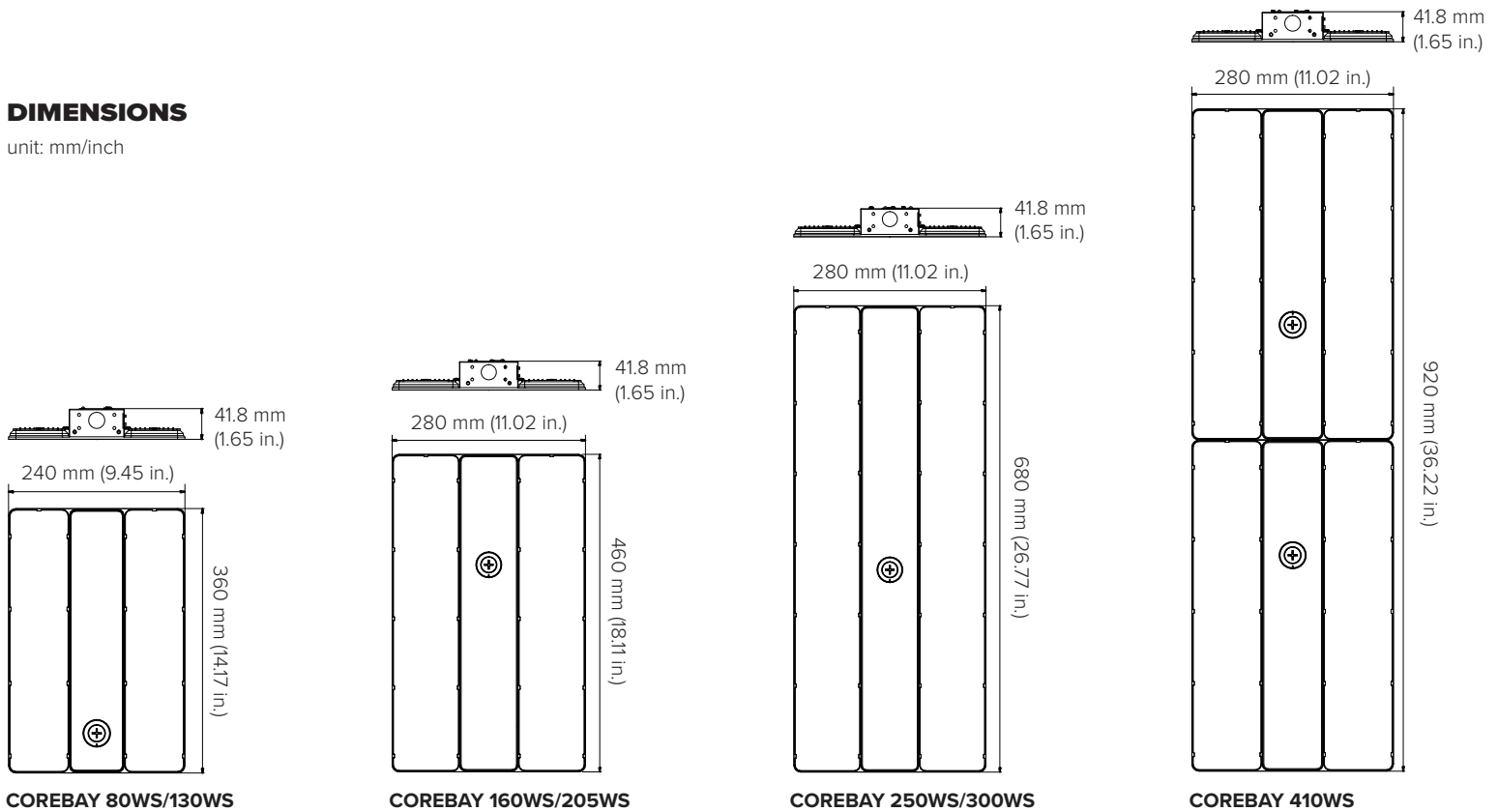
COREBAY 250WS					
SETTING	SYSTEM WATTS	4000K		5000K	
		LUMENS (80CRI)	LPW (80CRI)	LUMENS (80CRI)	LPW (80CRI)
LV1	100 W	16,400 lm	164 lm/W	16,400 lm	164 lm/W
LV2	150 W	24,000 lm	160 lm/W	24,000 lm	160 lm/W
LV3	200 W	30,200 lm	151 lm/W	30,200 lm	151 lm/W
LV4	250 W	36,100 lm	144 lm/W	36,100 lm	144 lm/W

COREBAY 300WS					
SETTING	SYSTEM WATTS	4000K		5000K	
		LUMENS (80CRI)	LPW (80CRI)	LUMENS (80CRI)	LPW (80CRI)
LV1	120 W	20,000 lm	167 lm/W	20,000 lm	167 lm/W
LV2	180 W	28,000 lm	156 lm/W	28,000 lm	156 lm/W
LV3	240 W	36,000 lm	150 lm/W	36,000 lm	150 lm/W
LV4	300 W	42,000 lm	140 lm/W	42,000 lm	140 lm/W

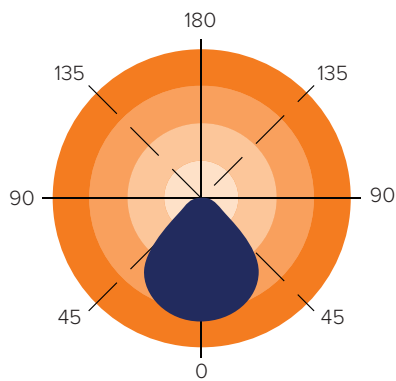
COREBAY 410WS					
SETTING	SYSTEM WATTS	4000K		5000K	
		LUMENS (80CRI)	LPW (80CRI)	LUMENS (80CRI)	LPW (80CRI)
LV1	164 W	28,000 lm	171 lm/W	28,000 lm	171 lm/W
LV2	246 W	38,400 lm	156 lm/W	38,400 lm	156 lm/W
LV3	328 W	50,000 lm	152 lm/W	50,000 lm	152 lm/W
LV4	410 W	60,600 lm	148 lm/W	60,600 lm	148 lm/W

DIMENSIONS

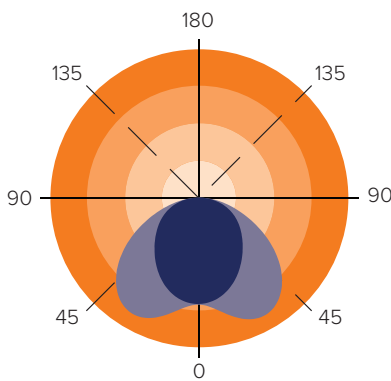
unit: mm/inch



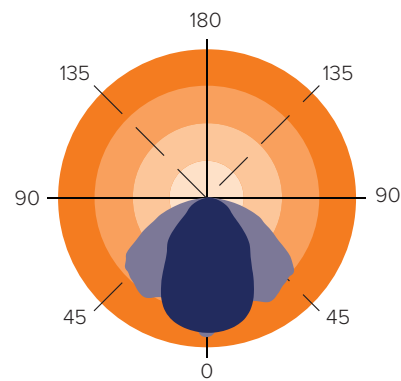
PHOTOMETRICS



General



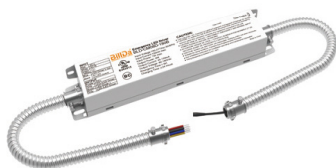
Aisle



Narrow

ACCESSORIES

Optional



EM8

8 W, 900 lm, 90 min, suit for 80WS, 130WS (Sold separately)



EM16

16 W, 200 lm, 90 min, suit for 160WS, 205WS (Sold separately)



EM25

25 W, 3500 lm, 90 min, suit for 250WS, 300WS, 410WS (Sold separately)



EM30

30 W, 4000 lm, 90 min, suit for 347-480V input voltage. (Sold separately)



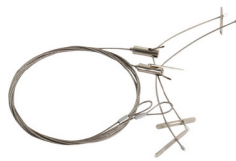
Plug-and-Play PIR Sensor 12-24VDC

PIR Sensor: MP
Bluetooth PIR Sensor: MPBA (Sold separately)



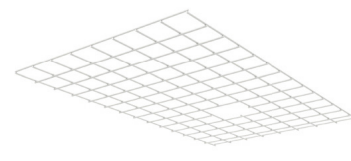
Plug-and-Play Microwave Sensor 12-24VDC

Microwave Sensor: MWP
Bluetooth Microwave Sensor: MWPBA (Sold separately)



Steel Wire Rope (Default)

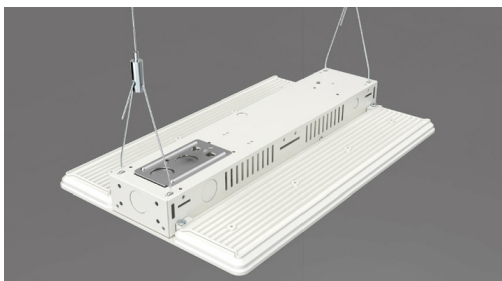
USE: Chain mounting



Wire Guards

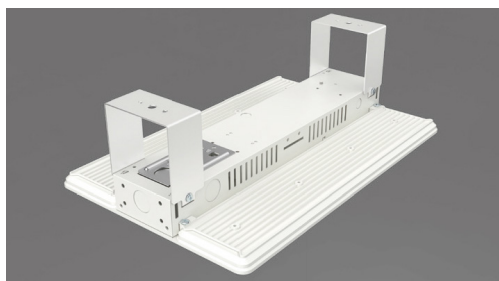
(Sold separately)

MOUNTING



CMY10FT / CMY15FT

10 FT / 15 FT SS Mounting Cables with Y-Toggles



SMBK

Surface Mount Bracket



PMBK

Pendant Mount Bracket